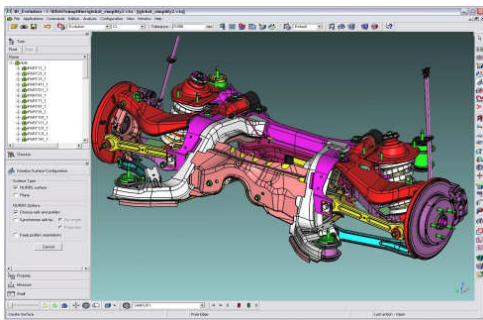


CONVERSION ENGINE

Optimize your data exchange with customers, sub-suppliers and engineering partners with a loss free conversion and automatic healing of 3D Models. 3D_Evolution[®] conversion engine supports all primary CAD formats, allowing users to access the data without a CAD licence. Heal surfaces within seconds through new faces, while at the same time correcting edge curves and basic surfaces. The well known healing functions for the removal of over-lapping and gaps, as well as the stitching for generation of continuous transitions between faces, have been accelerated through algorithm optimizing. The software is built modular and has an easy to use GUI. A scripting language makes all functions also available in batch mode.



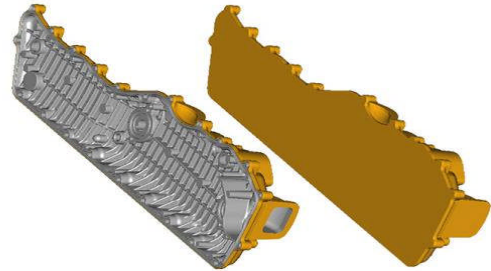
FEATURE BASED

This fully integrated module allows for an interoperability with history and parametric. Native Interfaces directly read the feature information without access to the source CAD-System. The history optimization during the transformation process is taking full account of the feature types available in the target system. CT Plug-ins in the target CAD-System automatically generates the model. The resulting geometry can be compared to the source model. Potential discrepancies will be highlighted in the GUI. Batch or interactive process mode are available.

SIMPLIFIER

With the click of a button, the simplifier module generates a bounding geometry of individual parts or assemblies by removing all internal faces (to protect your intellectual property) or generating light weight models. This is indispensable for the generation of simple models for digital mock-

up. Features such as drill holes, cavities, or grooves are closed and simplified. The removal of the model's complexity will drastically reduce the file size in a matter of seconds, making it ready for assembly studies. The user can generate scripts to repeat the process in batch mode.

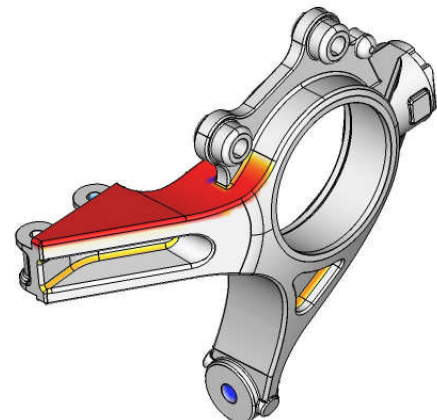


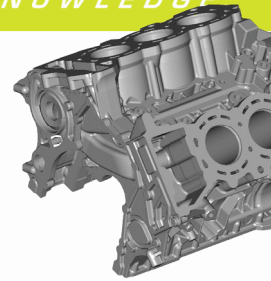
PDQ CHECKER

The different error-types are displayed on the model and can be easily identified and resolved within seconds using special Repair functions. The Checker is certified for the VDA 4955/2 and SASSIG specifications.

GEOMETRICAL MODEL COMPARISON

With the Advanced Compare function, the geometry of two 3D models can be compared. 3D_Evolution[®] can record geometric differences exceeding user-defined tolerance, and will display this on the model in a special 3D_Evolution[®] Viewer format. The whole process can also be run in batch mode and for complete indices, whereby a HTML-log data lists the results for all models. The generation of the viewing model showing the discrepancy in detail occurs only when discrepancies are actually present.

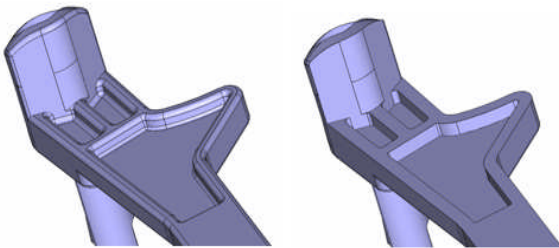




www.coretechnologies-inc.com

FEM TOOLS

The ideal link for the seamless connection between the CAD and the FEM worlds. Mini patches and their basic surfaces can be merged through the Meta-face function within user-defined tolerances. De-features functions for geometry simplification, and automatically remove features such as holes, rounds, chamfers and small details. The function can be set by user defined parameters.



ENTERPRISE BATCHMANAGER(EBM)

Allows all users in a company network to access the 3D_Evolution® batch mode. Also, users of Windows, Linux and Unix operating system environments are free to individually define their conversion tasks being processed in the central job list. Multiple network computers can be used to convert extensive data.

KEY DIFFERENTIATOR FROM THE COMPETITOR:

1. Eliminates the need to be dependent on MCAD Systems.
2. 3D_Evolution® directly reads the BREP geometry without the need of a CAD system or runtime license.
3. Fast tessellations of 3D models and healing functions for triangulated data.
4. Ability to use 3D_Evolution®'s Automatic healing functions through the EBM
5. Ability to read parametric features from the source CAD files
6. Ability for design team to use the 3D_Viewer to quickly identify problem areas of 3D models without changing the translated model.
7. The 3D_Viewer can use the VDA checker which is certified to be true to the VDA 4955/2 Norm (which is authenticated by the SASIG, ODETTE, GALIA and VDA organizations).
8. Scale ability – Grid computing or the ability to incorporate in to PLM systems

OPERATING SYSTEMS

- Windows – 2000 /XP / or VISTA
- Linux – Suse and Redhat

LICENSEMANAGER

- Node-locked or Floating using the Flexlm Netlicense-Manager. Also available for UNIX as well as Tripple license servers

LANGUAGES

- Menu and Online-Help in English, French and German.

INTERFACES

| B-REP Nativeinterfaces and Plugins | read | write |
|---|-----------|-----------|
| CATIA V 4 bis 4.2.4 (model, exp) | X | X |
| CATIA V5* R6-R18 (CATPart, CATProduct) | X | X* |
| Unigraphics up to NX4 (prt) | X | X(Plugin) |
| Parasolid XT up to 16(x_t) | X | X |
| Pro/Engineer up to Wildfire 4(prt, asm) | X | X(Plugin) |
| Pro/Engineer up to Wildfire 4(neu) | X | X |
| I-DEAS M11 (Prt, Mf1, PKG) | X(Plugin) | X(Plugin) |
| I-DEAS M11 (unv,arc) | X | |
| ACIS SAT up to v. 8 (sat) | X | X |
| SolidWorks up to 2008 (sldprt, sldasm) | X | |
| JT Open (jt) | X | X |
| CADDS 5 (_pd) | X | X |
| ROBCAD (rf) | X | X |
| Matra EUCLID (e3i reading and ci writing) | X | X |
| Straessle EUKLID (edx) | X | X |
| MechanicalDesktop SAT | X | X |
| OpenNurbs Rhino3D | | X |
| Medusa 3D (asc) | X | |
| B-REP Standardinterfaces | read | write |
| VRML 1 and 2 | X | X |
| STL (binary, ascii) | X | X |
| STEP AP214 / AP203 | X | X |
| IGES 5.3/5.2 | X | X |
| VDA | X | X |
| Feature Interfaces and Plugins | read | write |
| CATIA V4 2.4.2 | X | |
| CATIA V5 up to R18 | X | X(Plugin) |
| Unigraphics up to NX4 | Sept/2008 | X(Plugin) |
| SolidWorks up to 2007 | Sept/2008 | X(Plugin) |
| ProEngineer up to Wildfire 3 | X | X(Plugin) |

Plugin = CAD License and System required



CT CoreTechnologie GmbH
 Am Kreuzberg 7
 D - 63776 Mömbris
 Tel: +49 (0) 6029 99 43 86
 Fax: +49 (0) 6029 99 43 87
 info@de.coretechnologie.com
 Germanv

CT CoreTechnologie France S.A.R.L.
 38 place des pavillons
 F-69007 Lyon
 Tél : +33 (0)4 78 61 79 42
 Fax: +33 (0) 478 61 74 49
 info@fr.coretechnologie.com
 France

CT CoreTechnologies Inc.
 63 Dixie Hwy
 Rossford, OH 43460 USA
 Tel: (419) 662-7700
 info@coretechnologie.com
 USA